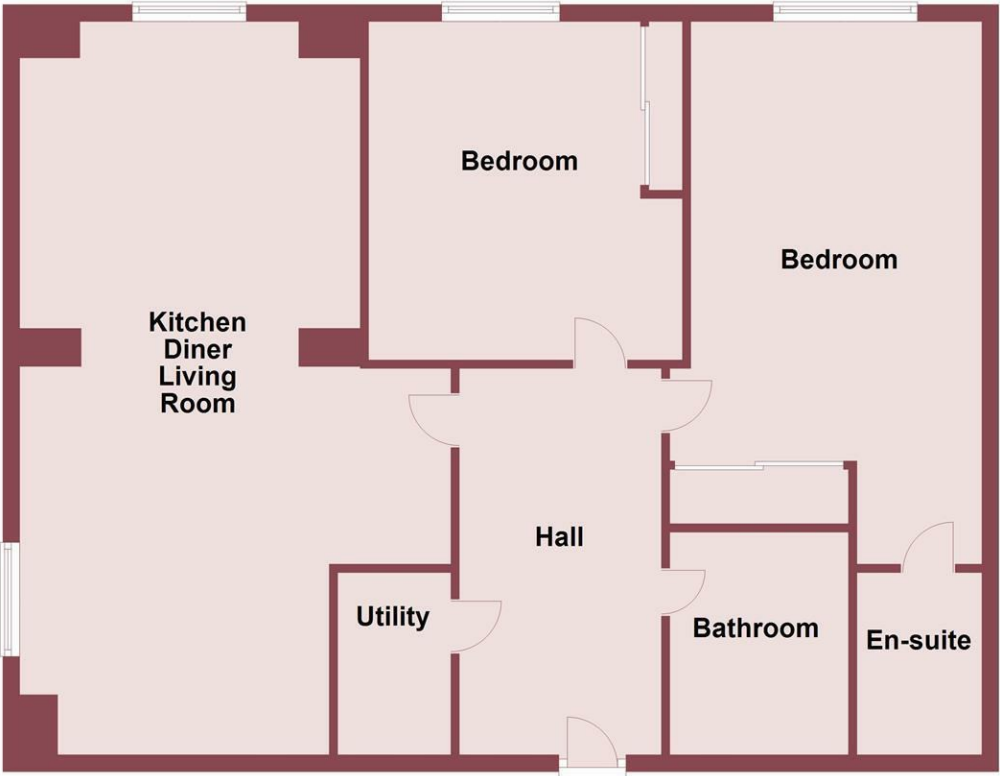




Ground Floor



Whilst every attempt has been made to ensure the accuracy of this floor plan, measurements of doors, windows, rooms and any other items are approximate and no responsibility is taken for any error, omission or mis-statement. The plan is for illustrative purposes only and should be used as such by any prospective purchaser. The services, systems and appliances shown here have not been tested and no guarantee to their operability or efficiency can be given.
Plan produced using PlanUp.



Dock Road, Birkenhead, CH41 1DP
£850

2 Bedroom 1 Reception 2 Bathroom C

***Two Bedroom Apartment - Sought After Development - Ideal Location ***

Hewitt Adams is delighted to bring to the market this TWO BEDROOM apartment located on the THIRD FLOOR of the SOUGHT AFTER East Float Quay development.

In brief the property affords front entrance into hall, kitchen diner living space, utility room, two double bedrooms, an en suite to the larger bedroom, and a bathroom.

With secure entry system and allocated parking for one car.

Unfurnished, Available Late September, No Pets

Hallway

Radiator

Kitchen / Living Space

29'8x18'0 (9.04mx5.49m)

Wall and base units, inset sink, integral oven and electric hob, integral fridge and freezer, integral dishwasher, double glazed windows, radiators, power points

Utility

There is a washing machine and tumble dryer included in the let. (maintained or replaced at the landlords discretion)

Bedroom 1

21'03x12'05 (6.48mx3.78m)

Double glazed window, radiator, power point, integral wardrobe, door to:

En-Suite

Walk in shower, WC, wash hand basin, towel rail, tiled walls and floor

Bedroom 2

13'6x12'3 (4.11mx3.73m)

Double glazed window, radiator, power point, integral wardrobe

Bathroom

Comprising shower over bath, WC, wash hand basin, towel rail, tiled walls

Parking

One allocated space.

